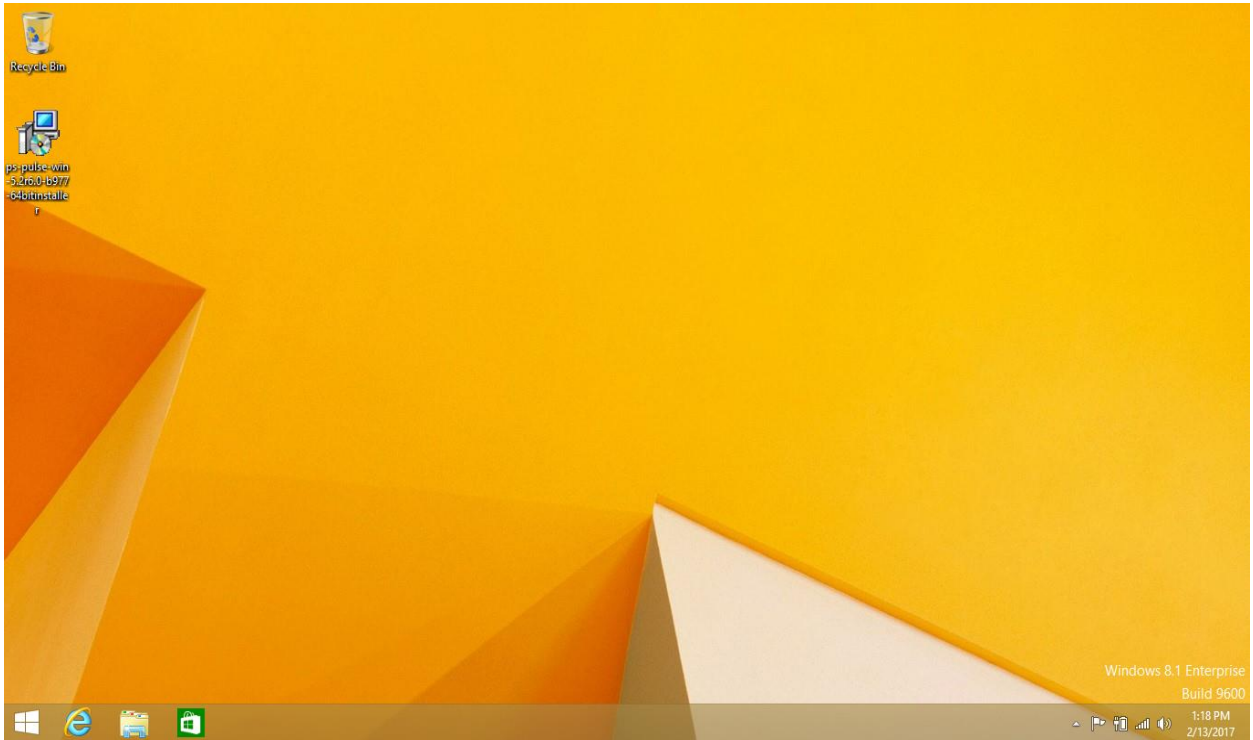
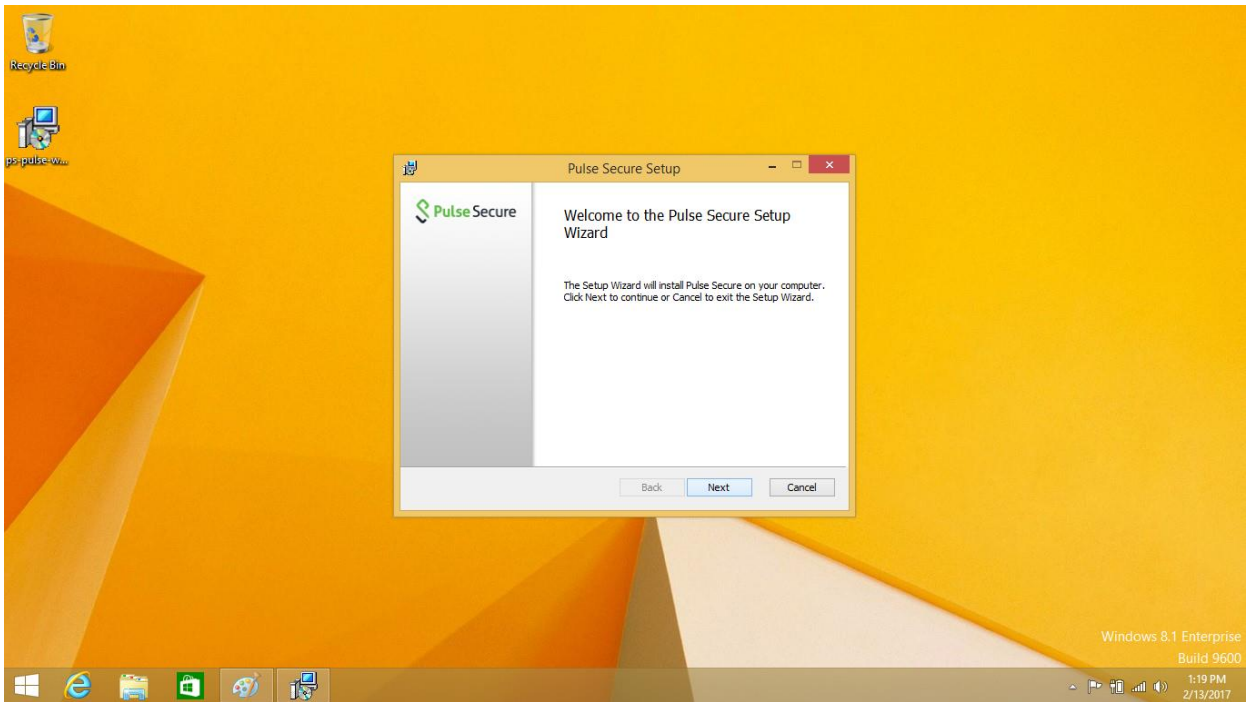


# Pulse Secure VPN Installer Guide: Windows 8 / 8.1

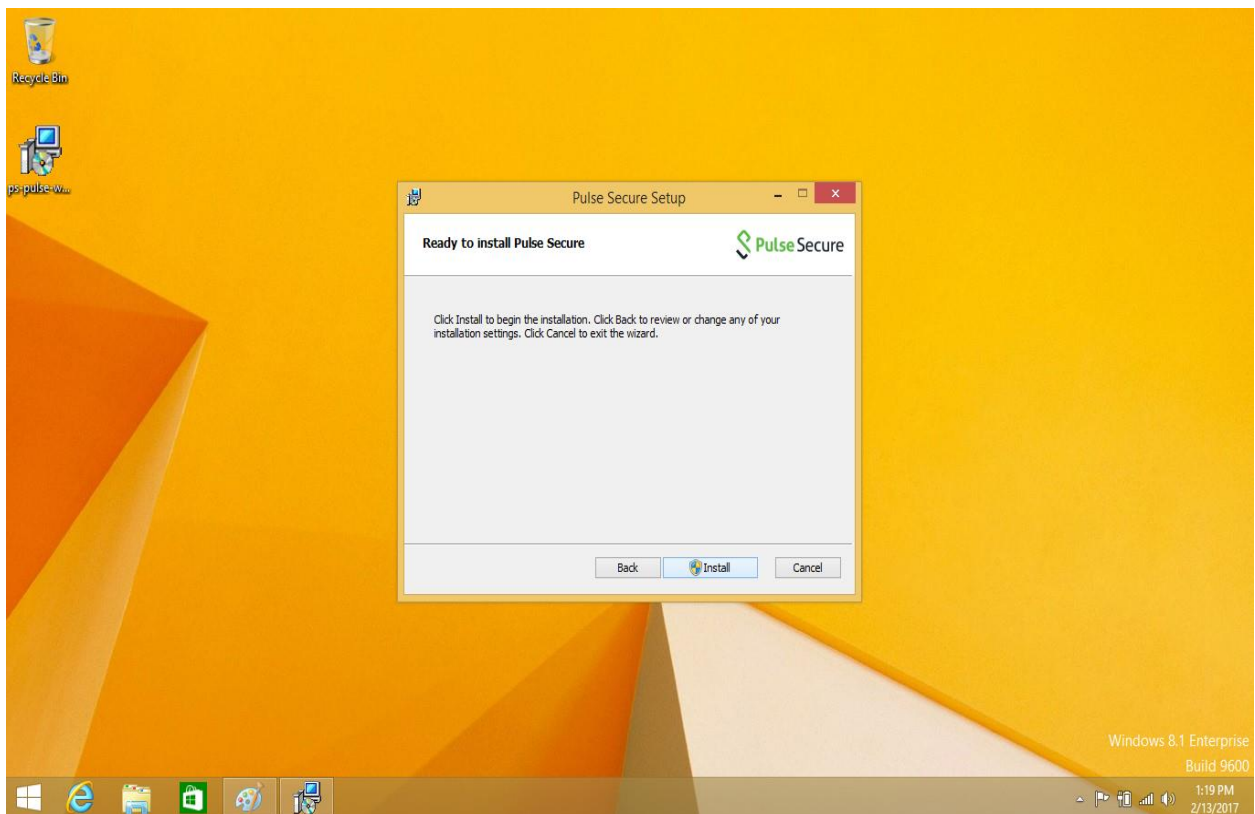
1.) Save the installation file from the Wheaton College website to your desktop.



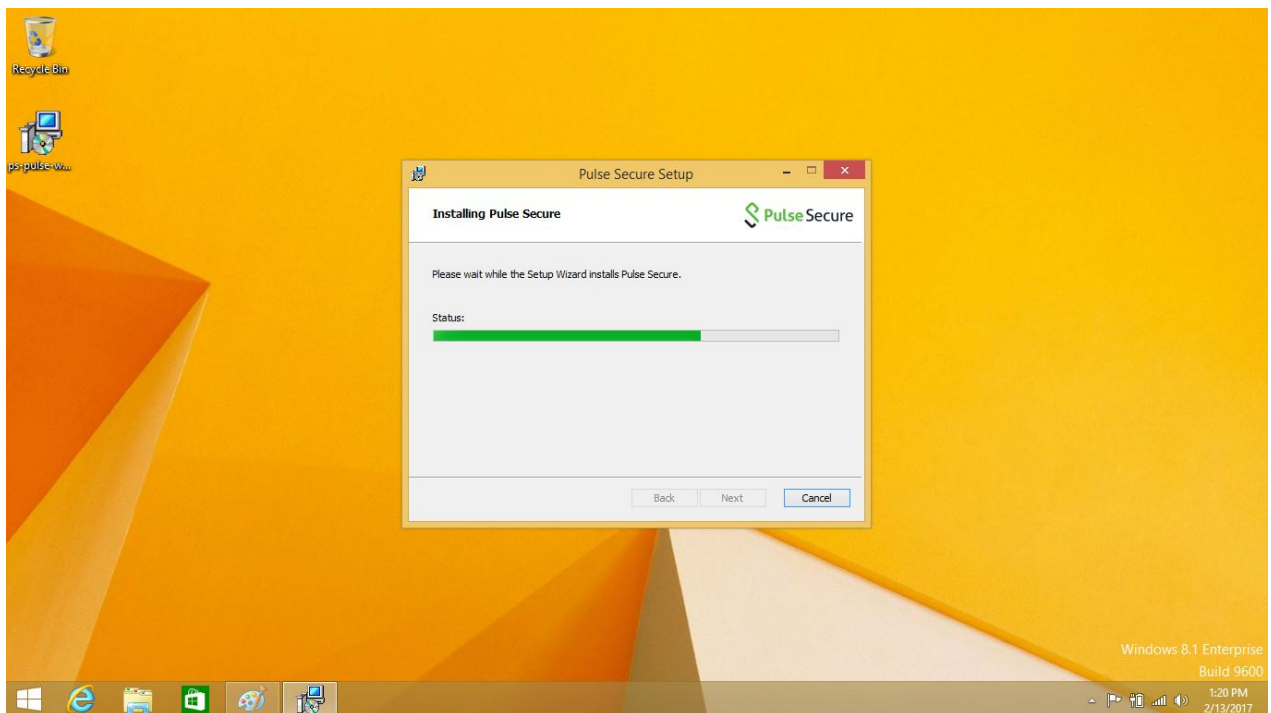
2.) Double click on the Pulse Secure Installer. Click on the “Next” button.



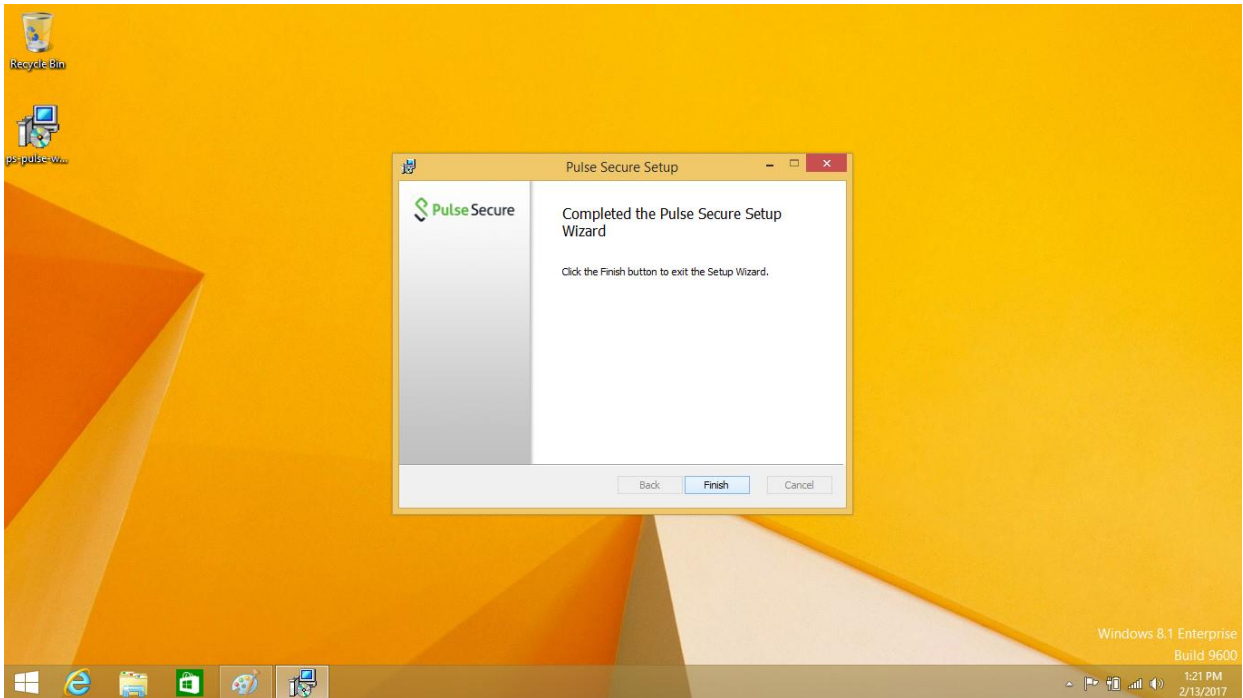
3.) Click on the “Install” button



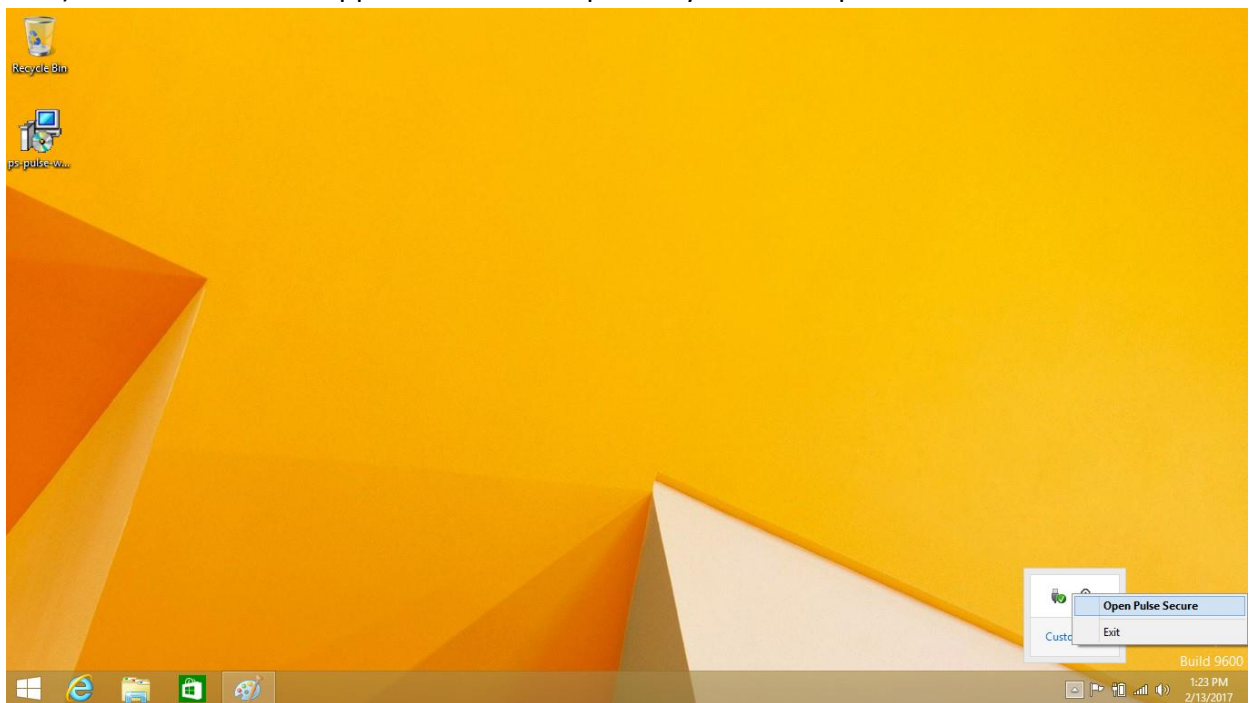
4.) The Application should begin installation. If a user account control box pops up, click on the “Allow” button.



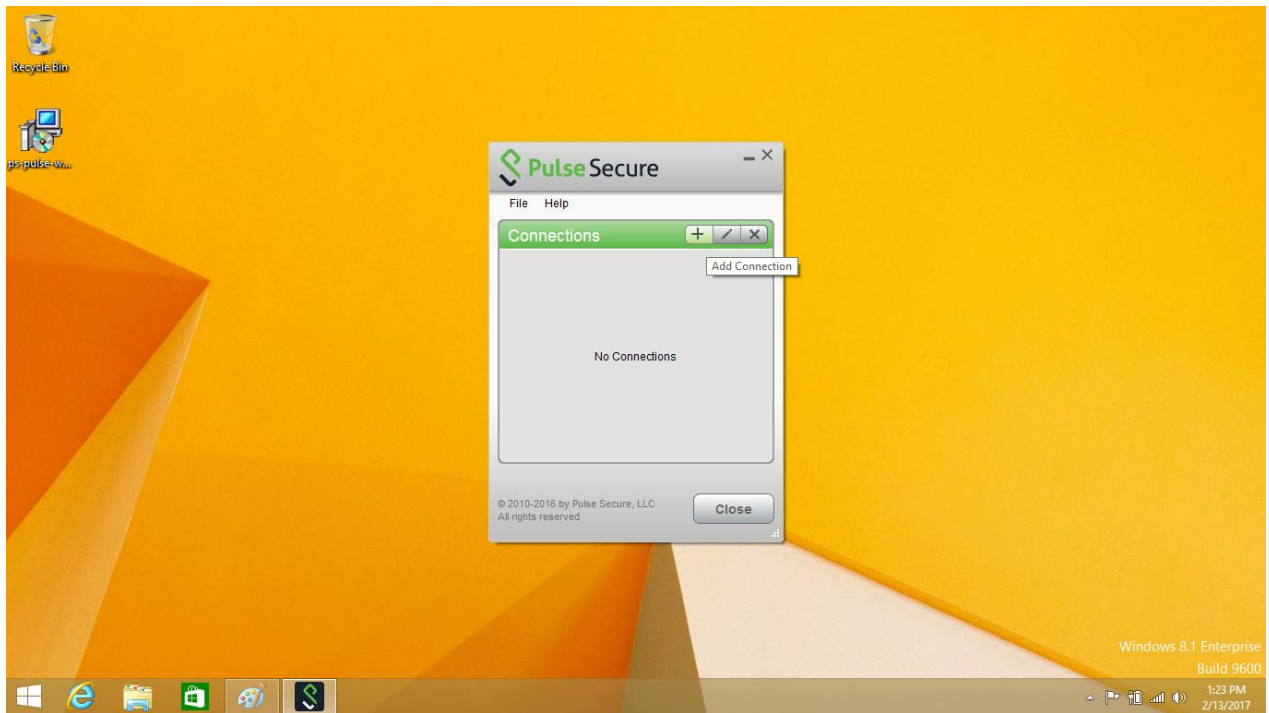
5.) Click on the “Finish” button. The application is now installed.



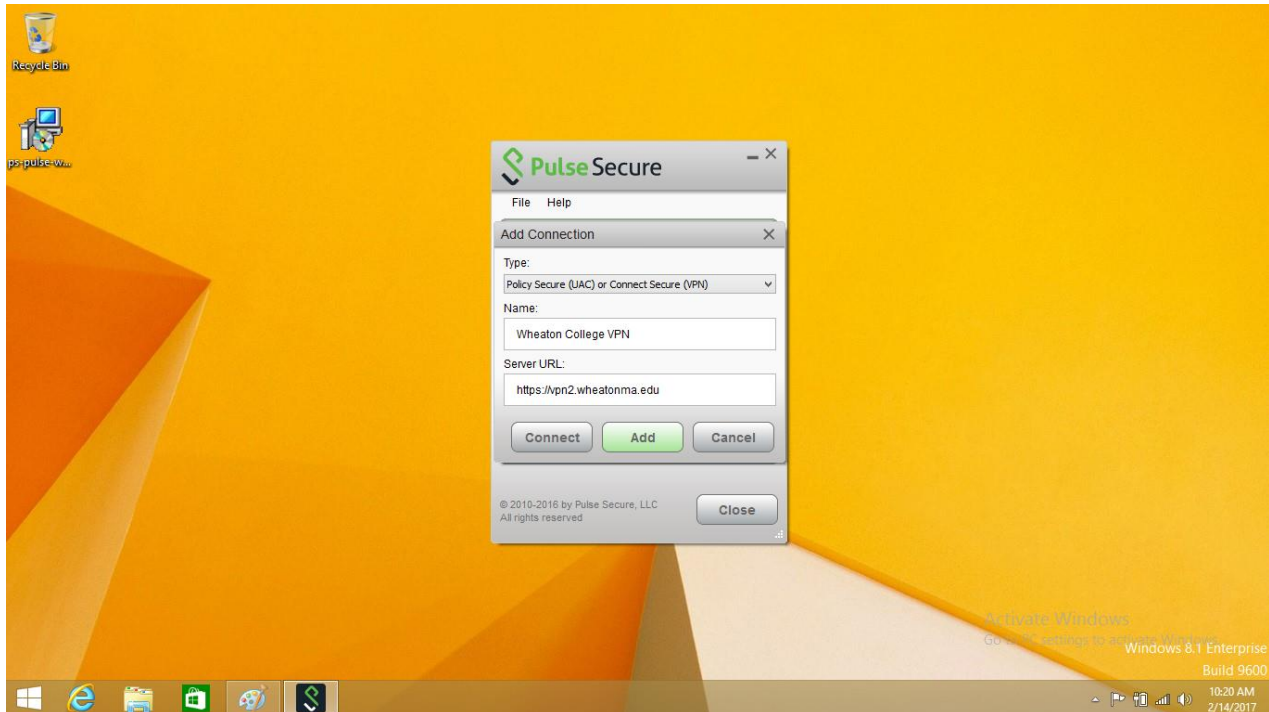
6.) Locate the Triangle symbol on the bottom right-hand corner of your desktop. Click on the Triangle to open up the running applications box. Double click on the icon shaped like a “S” (Pulse Secure VPN). Pulse Secure VPN Application should open on your desktop.



7.) Click on the plus icon [+] to add a new connection.



8.) Leave the “Type” field to the default (Policy Secure (UAC) or Connect Secure (VPN)). Enter “Wheaton College VPN” in the name field. In the “Server URL:” field enter <https://vpn2.wheatonma.edu> and click on the “Add” button.



9.) Click on the "Connect" button for the Wheaton College VPN Profile.

