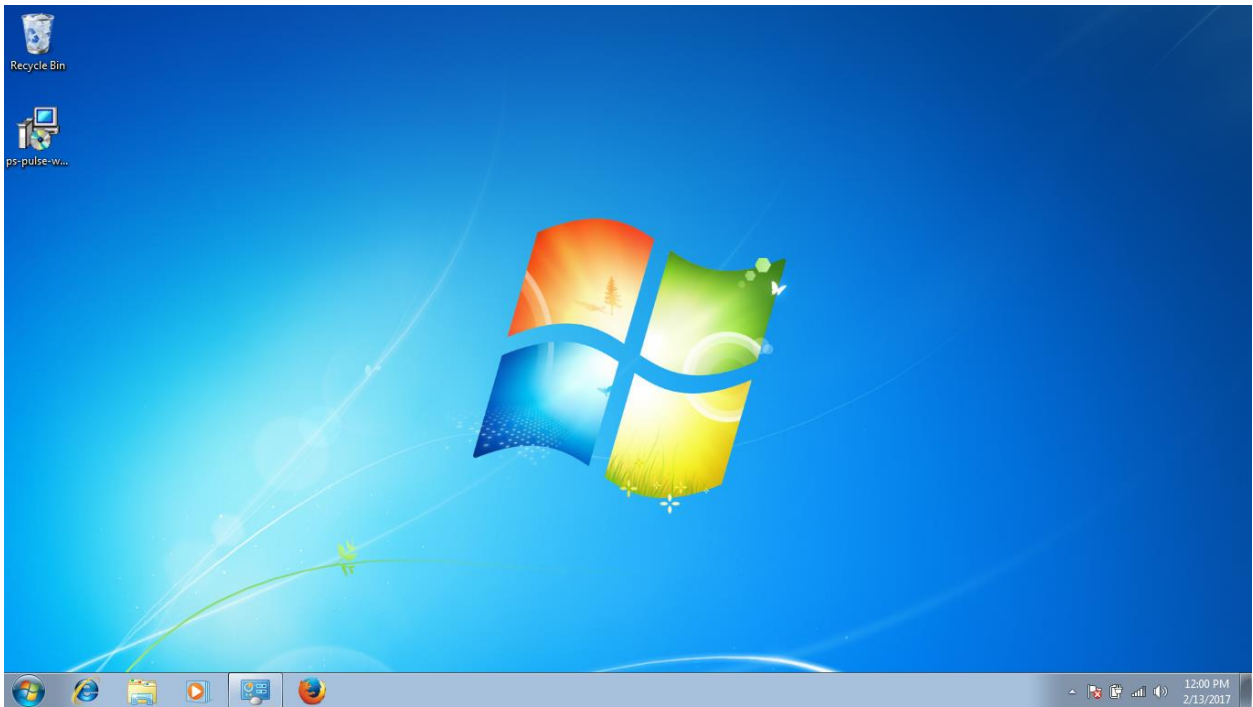
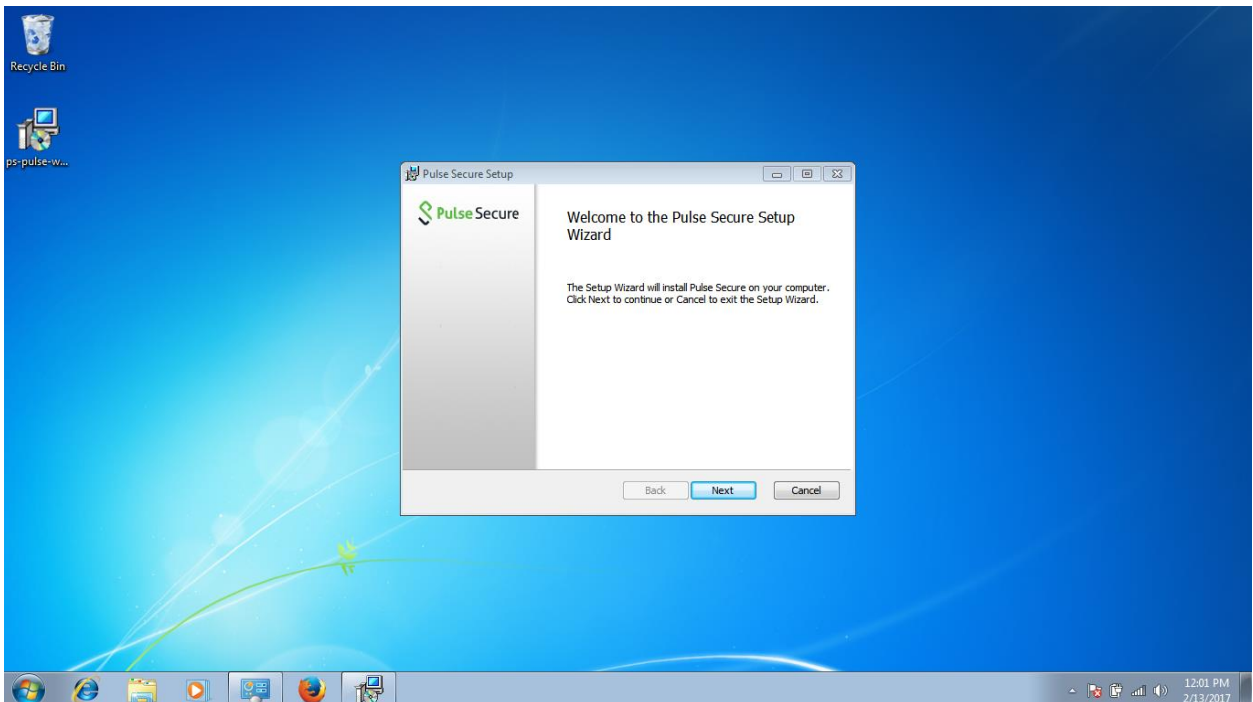


# Pulse Secure VPN Installer Guide: Windows 7 (32/64 Bit)

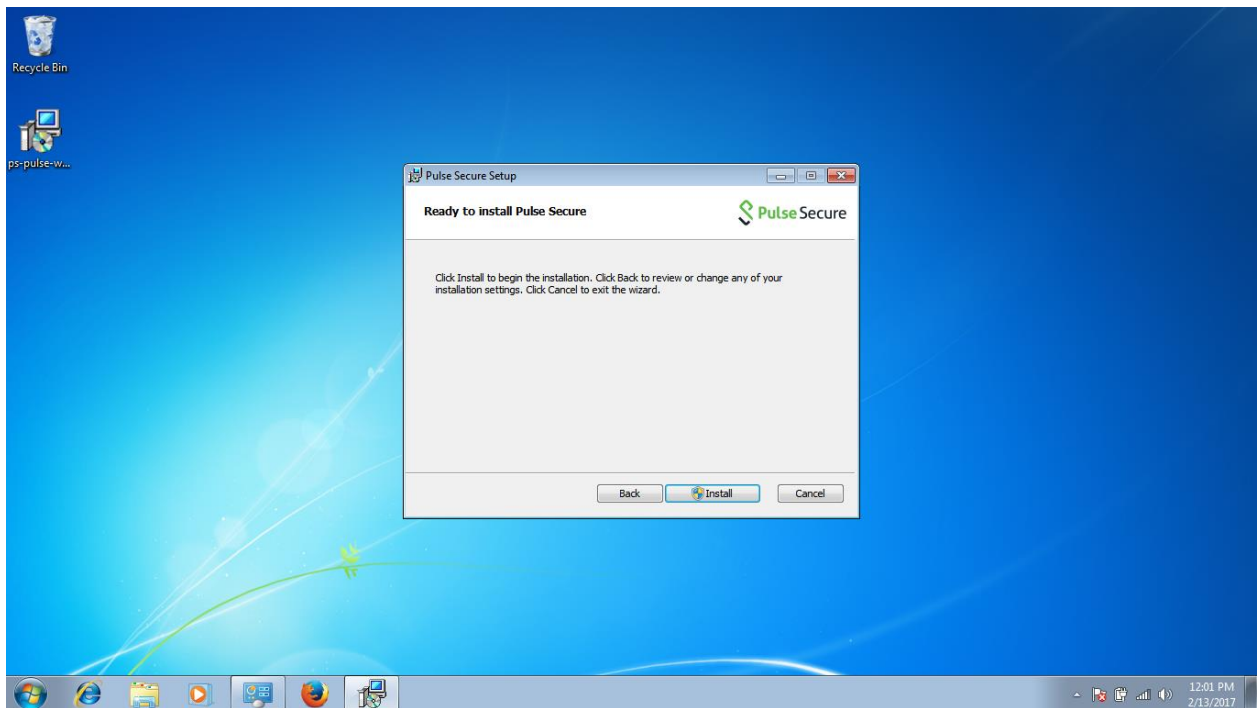
1.) Save the installation file from the Wheaton College website to your desktop.



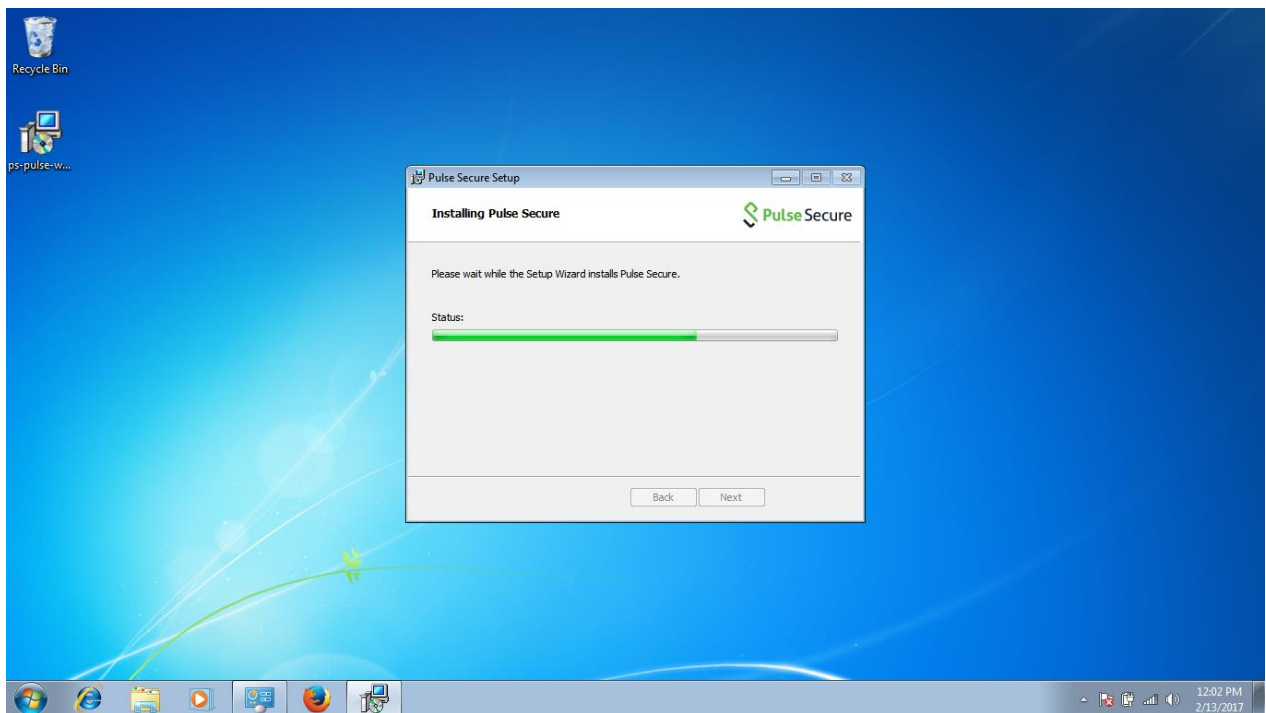
2.) Double click on the Pulse Secure Installer. Click on the “Next” button.



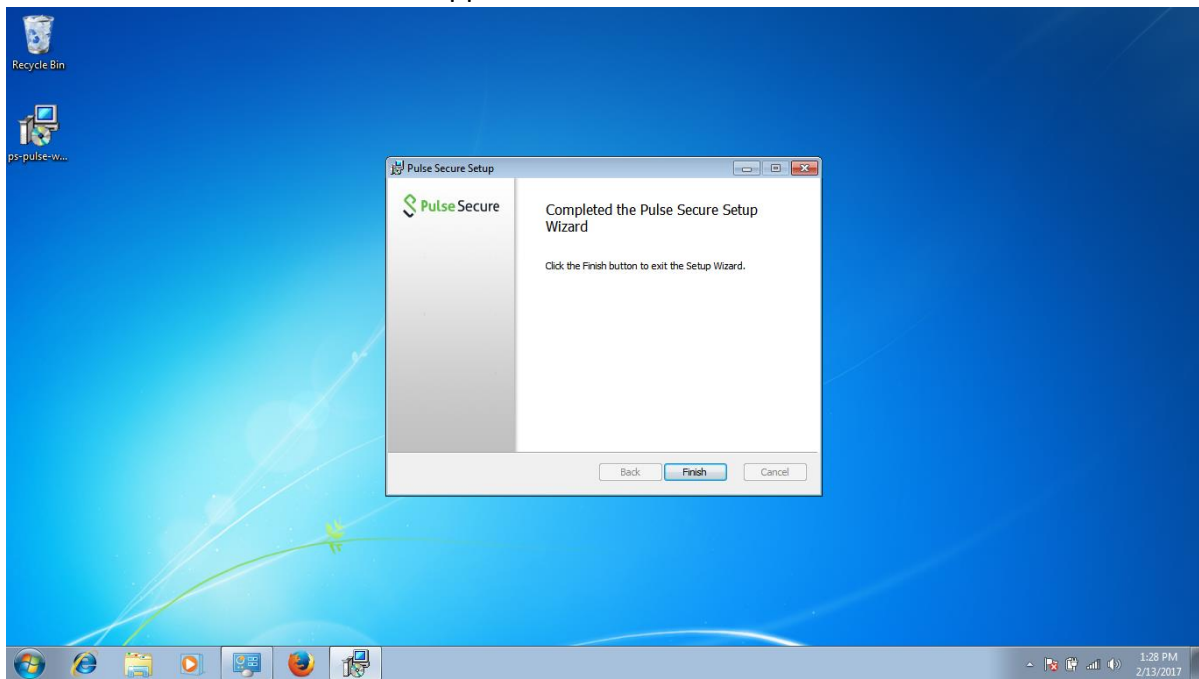
3.) Click on the “Install” button



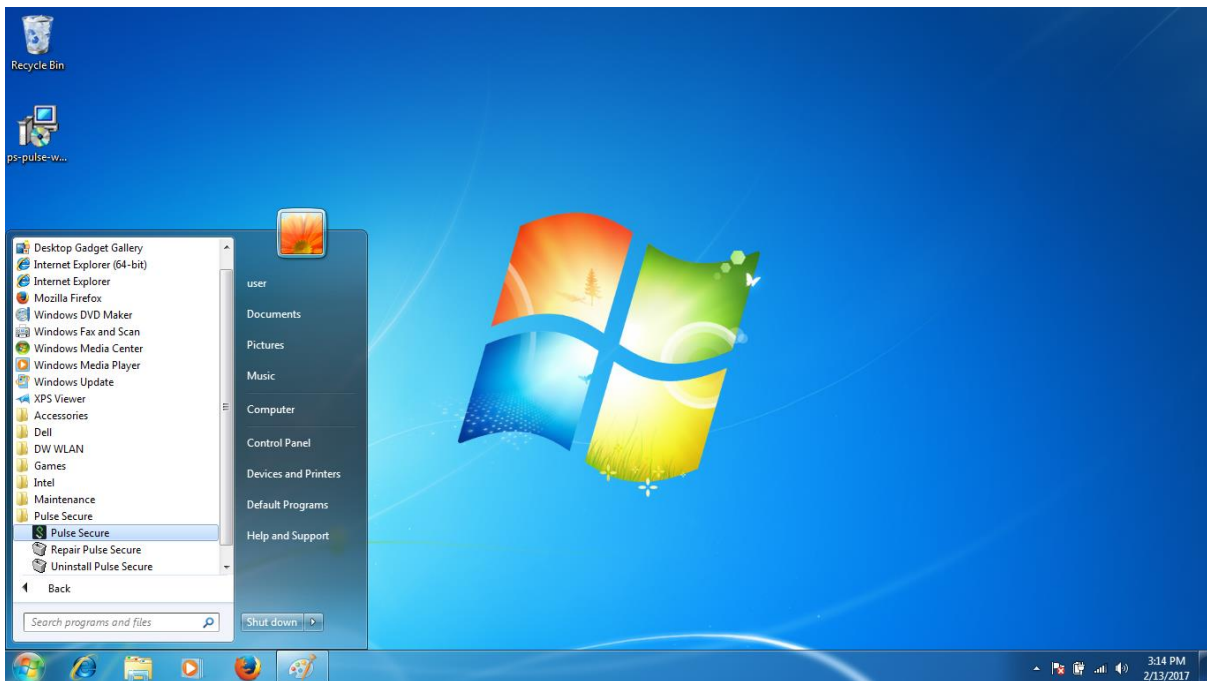
4.) The Application should begin installation. If a user account control box pops up, click on the “Allow” button.



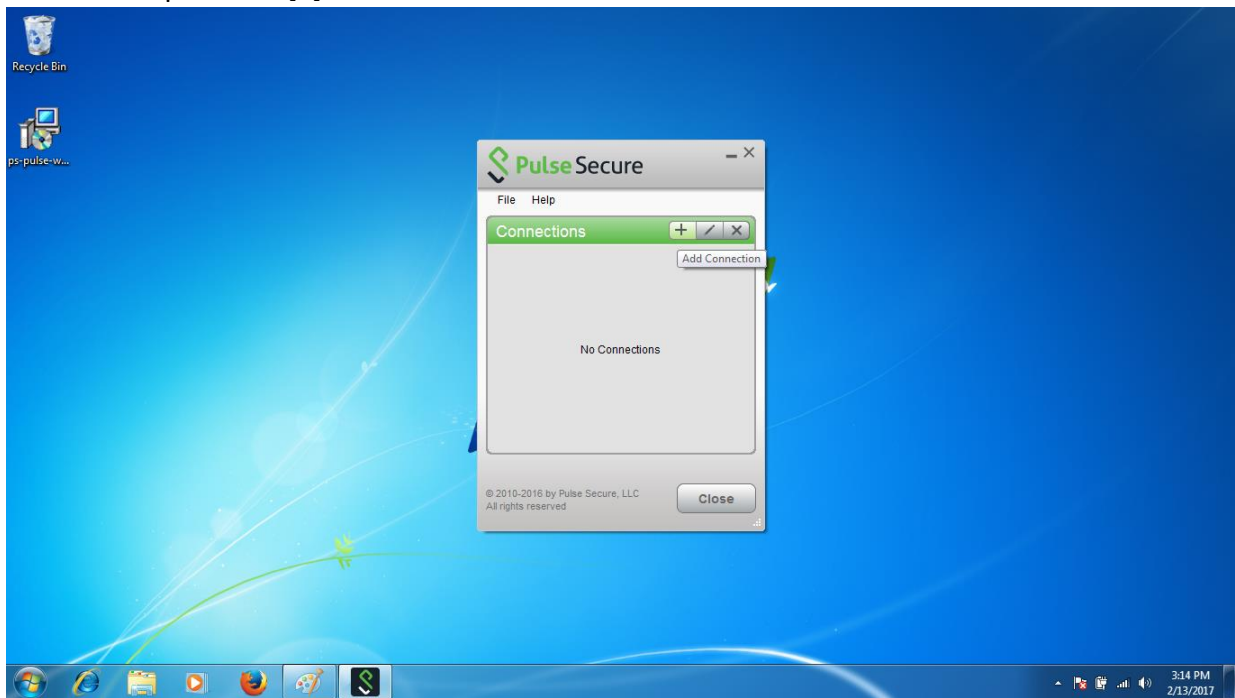
5.) Click on the “Finish” button. The application is now installed.



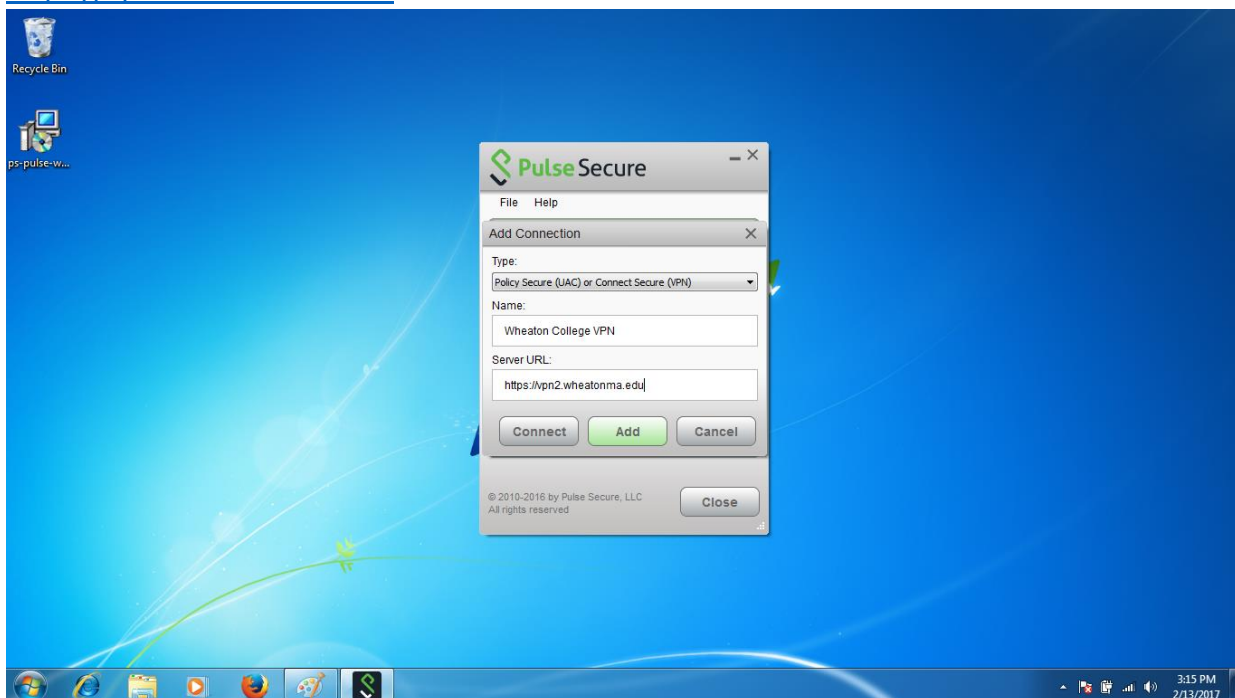
6.) Click on the Windows Start Icon in the bottom left-hand corner and then click on “All Programs”. Locate the Pulse Secure folder and click to open. Click on the “Pulse Secure” application to start.



7.) Click on the plus icon [+] to add a new connection.



8.) Leave the "Type" field to the default (Policy Secure (UAC) or Connect Secure (VPN)). Enter "Wheaton College VPN" in the name field. In the "Server URL:" field enter <https://vpn2.wheatonma.edu> and click on the "Add" button.



9.) Click on the “Connect” button for the Wheaton College VPN Profile.

